

From Antoinette Hall, General Manager, Eureka Tower

We thank everyone in the building again for following the COVID-19 rules for Lockdown No. 5 and being respectful of others.

We are keeping a close eye on all the affected Victorian Government sites and we recommend you all do the same. Stay safe.



Lift etiquette during COVID

Face masks must be worn indoors and outdoors by anyone aged 12 years and over, whenever you leave your home – unless a lawful exception applies.



Where possible, face masks should be worn in the lifts especially if you cannot maintain 1.5m social distancing.

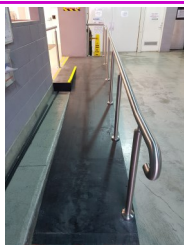
There are still many people in the building who have not had their vaccinations and are vulnerable, either elderly or not in the best of health who have real concerns about COVID and the effect it could have on them if they were to contract it, so please be respectful to all who live at Eureka Tower.

New Ramp in Loading Dock

A new ramp has been installed in the loading dock to make it easier for residents to pick up their packages.

We have a number of trolleys that can be utilised to pick up your packages.

Remember to always wear a mask when you are attending the loading dock or any common property areas.



Tier 1 & 2 Covid Exposure sites

Quite a number of Tier 1 & Tier 2 classified exposure sites were classified during the last Lockdown 5.0 and if you were exposed to any of these sites, you should have been notified by the DHHS and required to follow the necessary steps to get tested and isolate.

Tier 1 site exposure were required to isolate, get tested, isolate and have another test on the 13th day until a negative result. Tier 2 site exposure required you to isolate, get tested and isolate until you received a negative result.

Management will contact you regarding food deliveries, rubbish collection and anything else you need while you are isolating. Always inform concierge ASAP if you are required to isolate, so Building Management can assist you.

Smoking



If you need to smoke, please do so on your balcony with your balcony door closed, due to the effect secondary smoke has on fellow residents.

Opening a window while smoking inside an apartment makes the issue worse as smoke is pushed under the front door into the common area.

Smoke smells entering the common area from an apartment is in breach of the rules.

Hard Rubbish

Eureka Tower has very limited space to store large waste items for long periods. So due to an increase in requests for hard waste removals, the loading dock has arranged two regular pickups of hard rubbish by the City of Melbourne each month.

Residents are required to bring their own items down via the goods lift the night before collection. As collection days vary, bookings are essential. Please call the Loading Dock team on 9685 0116 who can assist you with your booking.

New Night Concierge

Please welcome Mostafa who is a new member of the concierge staff. Mostafa has taken over the position of the night concierge and works from 11pm to 7am. Please introduce yourself to Mostafa when walking through the foyer and welcome him to Eureka Tower.

Notice Board

Our noticeboard is currently turned off due to the touchscreen and COVID-19 requirements.

Ads normally on the residents noticeboard, can be found on the Eureka Living website: <https://www.eurekaliving.com.au/residents-noticeboard/>

Please email Concierge if you would like to put up an ad.

Community

Secure barcode and wire

Please do not tamper with the secure wire or barcode on your keys. If you wish to make any changes to the key set please advise concierge before dropping them off at the desk. A replacement fee of \$25.00 will be issued if the barcode or wire is tampered with or removed. Our Concierge team need these for holding your keys.

Discarding cigarettes over balconies

Concierge receives weekly reports of cigarette butts being found on residential balconies. Both lit and unlit.

Discarding cigarettes over the balcony is dangerous and disgusting.

Please ensure you use a closed ashtray at all times. Do not leave ash trays out on the balcony, as they can often be knocked over and blown around on windy days.

Apartment works

As the apartments age fittings and fixtures wear over time. This results in improvements to be made. It is important you understand what improvements do not need building management approval, such as cosmetic changes like painting. However many other changes will require standards to be met such as the changing of flooring and underlay which need to be adhered to, major renovations etc.

If you are planning any refurbishments, please take a look at the Eureka Living website for more information. If in doubt, contact Krystal on

Operations@eurekatower.com.au

<https://www.eurekaliving.com.au/eureka-services/operations-management/apartment-alterations/>

Private contractors

Any person who is completing private works within your apartment must first sign in at the loading dock.

This allows us to account for additional people onsite during an emergency, and ensures we have accurate contract tracing records if required. The process takes less than a minute.

Cars and Bicycles in the Carpark

To maintain Security in our carpark, please be reminded to register all cars and new bicycles with Concierge please.

It also allows the building management team to look up vehicles in the incorrect car parking bay, potentially saving you a towing fee.

COVID Contact Tracing QR Codes

QR Codes are now in various parts of Eureka Tower.

Although not compulsory, it would assist to quickly trace any visitors to the building who may have been exposed to a Covid case now and in the future. It is recommended your visitors check in when entering the building.

What's on in and around Southbank—Subject to COVID—Restrictions.

NGV FRIDAY NIGHTS

When: 04 June - 01 October 2021

French Impressionism with a line-up of fresh Melbourne music talent, DJ sets and French-inspired bars and dining.

Information: <https://whatson.melbourne.vic.gov.au/things-to-do/ngv-friday-nights>

FROZEN—The Musical

When: From 14th July

Where: Her Majesty's Theatre

The hit Broadway musical brings the much-loved film to life at Her Majesty's Theatre. Produced by Disney Theatrical Productions (The Lion King, Aladdin, Mary Poppins), Frozen allows you and your little ones step into Arendelle.

Bookings:

<https://frozenthemusical.com.au/tickets/?city=melbourne>



GRAZELAND

Get out (when you can) and experience a lively weekend venue offering a large and diverse range of vendors serving international bites & drinks.

When: Every Friday—Sunday

Where: 20 Booker St, Spotswood



THE LUME Melbourne

When: From 1st September—24th November 2021

Where: MCEC—South Wharf

THE LUME Melbourne is an epic adventure into art.

Why tiptoe through silent galleries to view masterpieces from afar when you can be immersed in the world of the artist on a grand scale? The inaugural experience at THE LUME Melbourne features the vibrant works of Vincent van Gogh.

Book Online: <https://thelume.com/melbourne/tickets/>

